

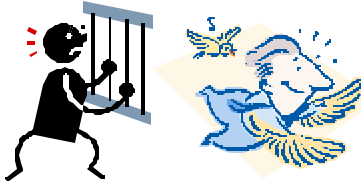


Helping People with disabilities since 1965

Find us on the web at:
WWW.Elmview.org

Or Email us at:
Elmview@elmview.org

Did you know?



People are getting out of institutions everywhere!

- 🔊 “Nine states and jurisdictions-Alaska, the District of Columbia, Hawaii, Maine, New Hampshire, New Mexico, Rhode Island, Vermont and West Virginia have closed all their state operated institutions. These states are successful models of deinstitutionalization and the pioneering examples of states that have created community-based delivery systems for their developmentally disabled populations.
- 🔊 States like Michigan, Minnesota, Colorado and West Virginia are reducing the number of persons with MR/DD housed in public institutions.
- 🔊 Currently, the New Jersey legislature is considering closing 5 or their 7 state operated institutions;
- 🔊 Massachusetts is considering closing 4 of their 6 state operated institutions;
- 🔊 Texas is considering closing all 13 of their state operated institutions and
- 🔊 Alabama is considering closing its last state operated institution.

MEANWHILE, IN WASHINGTON.....

- 💡 In 1966, 4145 individuals lived in 6 state (DSHS Division of Developmental Disabilities) operated residential habilitation centers (RHCs).
- 💡 By 2008, there were only 988 people living in 5 RHCs.
- 💡 By 2012, only 625 people will live in these large institutions.
- 💡 Special education in the schools and quality community supports and services over the past 40 years allow people to stay in their own homes and communities.
- 💡 Maintenance and fixed costs consume an increasing portion of RHC budgets
- 💡 Cost per person at Yakima Valley School is \$179,273 per year - \$14,939 per month. The average cost per person for people served by Elmview—\$82,923 per year, \$6,910/month
- 💡 The current population can be served by consolidating resources and capacity.
- 💡 The current number of vacancies at the RHCs excluding Yakima Valley include 15 at Fircrest, 10 at Rainier, 18 at Lakeland and 1 at Francis Haddon Morgan Center.

Thank you for your dedication!

Staff March Anniversaries



7 years

Terra Lawrence

6 years

James Shaw

5 years

Cecelia Ortiz
Dotty Jeronimo
Cynthia Ozuna

4 years

Carmen Ellingsworth
Erin Clarke



3 years

Alicia Figueroa
Maritza Ayala

2 years

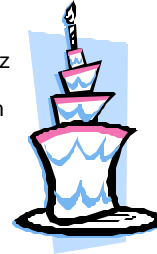
Karen Cheledinas

1 year

Kendra Hurst
Krystal McMullen
Emily Williams
Merrily Tompkins
Deborah Neuroth
Raymond Caron
Brian Smith
Jenna Jordan

March Birthdays

3/2 George Trevino
3/3 Kenneth Kiesel
3/3 Brewster Tollie
3/3 Rosa Vasquez
3/4 Zayra Chavez
3/5 Felecia Graham
3/6 Janay Thorne
3/7 Joanne Long
3/12 Nathaniel Laux
3/12 Miriam Silva
3/14 Debbie Ricker
3/15 Angela Anaya



3/15 Gary Kagey
3/16 John Silva
3/17 Jason Cosper
3/22 Nicole Crume
3/23 Dalziel Dyson
3/24 Mischaela Mathews
3/24 Kristl Miller
3/28 Gary Thorington
3/29 Rachell Potts
3/29 Don Thompson
3/31 Loretta Lane

1st Aid & CPR Training

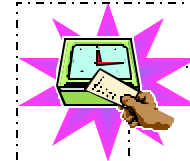
Every month

1st Wednesday 9am

3rd Wednesday 1pm



Happy Valentine's Day!



**Timesheets
are Due by 9 am**
Friday & Monday
2/13 & 3/2

Sometimes it is MORE than \$\$\$\$\$

Governor Gregoire's 2009-11 biennial budget proposal proposed closing the Yakima Valley School operated by the Division of Developmental Disabilities. The proposal is long overdue. Elmview and other programs throughout the state show every day that people with significant disabilities can be provided the support and services needed to live an active life in our communities. Simply stop and reflect about the people whom we have served over the years—Larry, Jackie, Don C.,--and others whom we currently serve to know that living in the community works. It works for nearly anyone given adequate supports and staff committed to making it work.

The closure of Yakima Valley School or Fircrest or Rainier have been discussed for years. It is ironic that a recession is needed to set closure in motion. Dollar savings and the need to reduce spending, may actually buy people with developmental disabilities their rights.

This state should adopt a policy of closure. Money would be saved. Dollars saved could be reinvested in the community system. More people could be served. Families could obtain the support needed before crisis. People doing the work could be paid more. Communities benefit from the contributions made when people with developmental disabilities live in them. Sometimes what is right can seem so simple.

Bruce Tabb

"Washington State may be experiencing an economic crisis, but while we continue to support institutionalization for persons with disabilities, we are also experiencing a crisis of conscience," said Von Elison, executive director of Central Washington Disability Resources.

GAME LES DEUX, '09

T F Yakima Valley School is an institution of higher learning

T F People 1st, a self-advocacy organization for people who are developmentally disabled, supports keeping institutions open

T F So many people want in, that we must keep institutions open

T F Parents can keep their son or daughter in an RHC even when there is no guardianship.

T F People with a range of significant disabilities live full lives in the community.